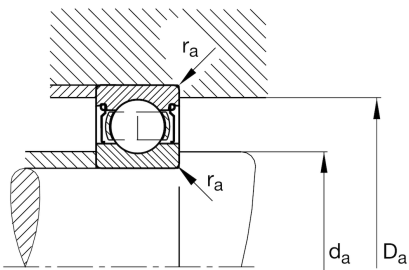
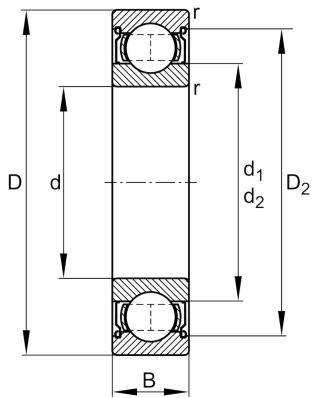
**FAG****6304-2Z**

Deep groove ball bearing

Schaeffler ID:
0167228840000Deep groove ball bearing 63...-2Z, single
row, shields, steel sheet metal cage

Technical information

**Dimensions**

r_{\min}	1.1 mm	Minimum chamfer dimension
D_2	44.4 mm	Caliber diameter outer ring
d_1	30.3 mm	Shoulder diameter inner ring
	0.155 kg	Weight

Main Dimensions & Performance Data

d	20 mm	Bore diameter
D	52 mm	Outside diameter
B	15 mm	Width
C_r	16,900 N	Basic dynamic load rating, radial
C_{0r}	7,900 N	Basic static load rating, radial
C_{ur}	540 N	Fatigue load limit, radial
n_G	16,800 1/min	Limiting speed
n_{gr}	14,400 1/min	Reference speed

Mounting dimensions

$d_{a\min}$	27 mm	Minimum diameter shaft shoulder
$D_{a\max}$	45 mm	Maximum diameter of housing shoulder
$r_{a\max}$	1.1 mm	Maximum fillet radius

Calculation factors

f_0	12.4	Calculation factor
-------	------	--------------------

Temperature range

T_{\min}	-20 °C	Operating temperature min.
T_{\max}	120 °C	Operating temperature max.